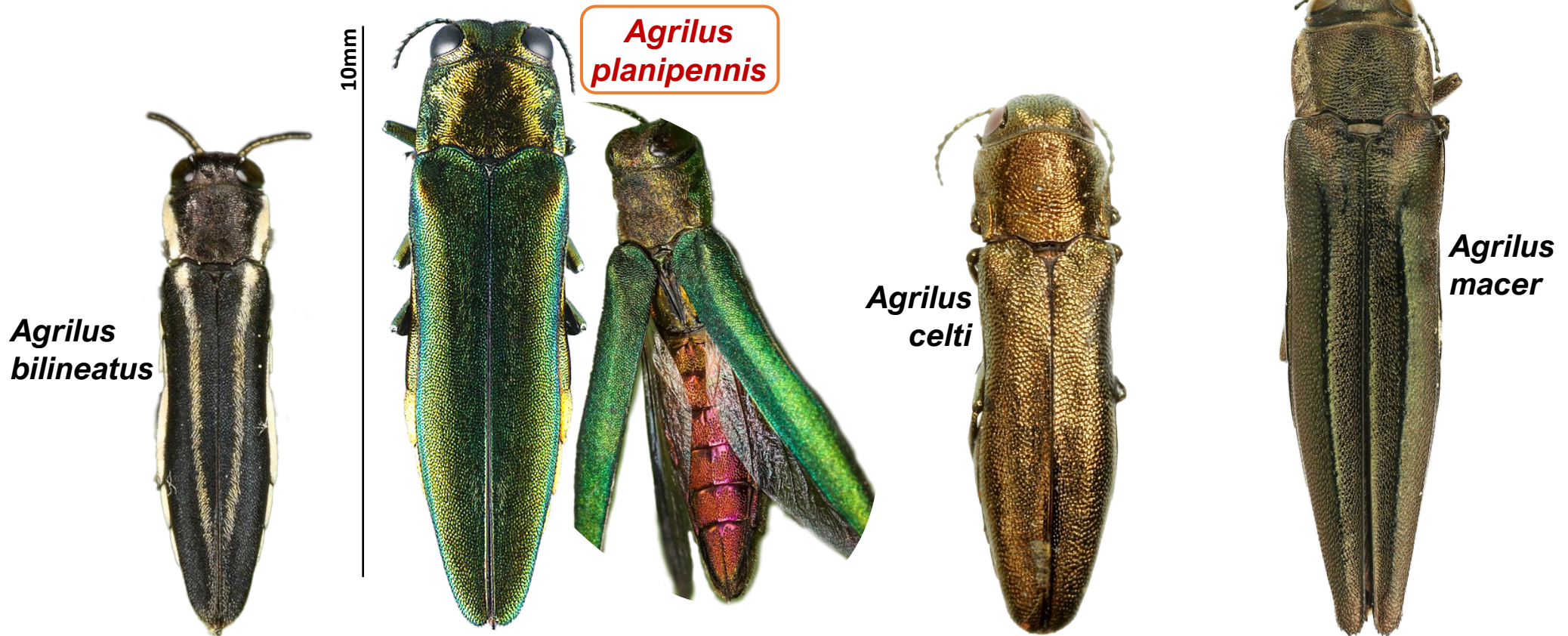


BORERS: Emerald ash borer & some native *Agrilus* species (Coleoptera: Buprestidae)

Agrilus spp. have a characteristic “bullet” shape



Two-lined chestnut borer

NATIVE. Metallic bronze-black to dark blue with two distinct white-yellow hairy stripes down elytra.

Length: 4-10 mm

HOST TREES: Oak (*Quercus* spp.), chestnut, beech and hornbeams.

Emerald Ash Borer (EAB)

INVASIVE. Metallic green with bronze undertones; rarely bluish-green. Dorsal abdomen is coppery-red.

Length: 10-13 mm

HOST TREES: Ash (*Fraxinus* spp.)

Hackberry borer

NATIVE. Metallic bronze-green to bluish green. Dorsal abdomen is same color as elytra (wing covers).

Length: 6-12 mm

HOST TREES: Hackberry (*Celtis* spp.)

Flatheaded hackberry borer

NATIVE. Metallic black to dark green. Has noticeable raised ridge on elytra.

Length: 8-16 mm

HOST TREES: Hackberry & Sugarberry

Emerald ash borer: green, native, look-alikes

INVASIVE
Emerald
Ash Borer

